

Pole Mount Fire Detection Unit

The perfect addition to existing infrastructure - Quick, Safe, Reliable Community

FS-PMFDU-01

HIGHLIGHTS

- Up To 12Km and 360° Fire/Smoke Detection Capabilities
- Ability to install up to 150' on new or existing towers
- AI - Fire, Smoke and Ignition Detection
- Multi User Web Platform for Live Streaming
- Wildfire Risk Modeling and Analysis
- E-mail or SMS Alert Notifications with Monitoring
- 120v Primary Power with Battery Back Up
- Solar Panels for Remote Locations
- 2 Days of Battery Life with a 4 Hour Charge Time
- Reliable, Efficient and Maintenance Free
- Plug and Play Installation Package
- Customizable Hardware and Software Features
- Cloud Data Storage
- Complete Remote Access via Web Platform
- Seamless Communication over LTE Signals
- Community Dashboard Access
- Victron Power Analytics and Control (VRM Portal)



FS-PMFDU-01

Introducing our client favorite – Pole Mounted Fire Detection System. This is a newly designed cost saving solution for locations with pre-existing Structures suitable for camera installation. This system is composed of two primary components. The camera box mounted up to 45m (150') up an existing structure and power box located 3m(10') up the same structure. This allows for pre-existing infrastructure to be utilized to its full potential, allowing Firesafe AI hardware to be installed, and Firesafe AI Software Implemented. A 3rd component, the Firesafe Solar Array can be incorporated for remote locations where power may not be available.



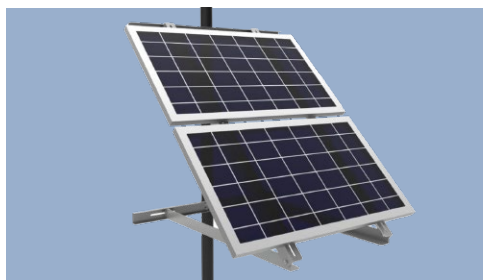
Pole Mounted Power Box

The power box will be mounted around 3m(10') off the ground. 120v Power will be hardwired into the receptacle provided. A robust 1200Wh Battery bank will provide UPS (uninterrupted Power Supply) for 24-36 hours in the case of power loss, with an AC-Fail alert being sent to the VRM Portal. This will ensure power can be restored prior to an off line incident.



Pole Mounted Camera Box

45m (150') of outdoor rated, gel filled Cat 6e will be provided for the install. This will allow the camera box to be mounted 45m (150') up a pre-existing structure, the Cat 6 is then plugged into the camera box and power box via Outdoor rated ports. This allows for a 360° view, only limited by the structure the camera box is mounted to.



Optional Solar Panel Array

In locations where power is not available, a solar panel array can be purchased to provide a charging system for the battery bank. 10' of PV cable will be provided as an extension cord between the 440w solar panel array and power box. The solar panel array will be mounted around 20' above ground level.



LTE and 5G Ready

Exterior antennas mounted on the side of the power box will allow for remote accessibility on each system, this allows for a quick connection and reliable stream for both the Firesafe Dashboard and VRM Portal.

SPECS

Overall Specifications

System Voltage	24v DC	Camera Box Dimensions (LxWxH)	60x33x41 (24"x13"x16")
Battery Backup Reserve Time	24-36 Hours	Power Box Dimensions (LxWxH)	41x25x45 (16"x10"x18")
IP Rating	IP56	Total Weight	18kg (40 Lbs)
Control	Remote - Mobile App and Desktop	Outdoor Operating Temp	45°C to - 40°C
Main Power Source	120v AC	Amperage (Float/Charge)	2A/6A
Charge Time	4 Hours to Charge (120v)	Heat Source	N/A

MODULE

Fire/Smoke Detection Specifications

(Data is still being collected for confirmation of below specs)

Detection Range	4-6km	Hot Spot Detection Capability?
Detection Rate	98% within 2km 95% within 4km 92% within 6km	Thermal Imaging and Temperature Sensing?
Field of View Horizontal	121.2° without Pan 270° with Pan (Limited by Structure Camera is mounted to)	Underground Heat Detection?
Field of View Vertical	36.5°	High Resistance Electrical Heat Detection?

MODEM

Modem

4G(LTE)	4G (LTE) - Cat 4 up to 150 Mbps, 3G - Up to 42 Mb/s, 2G - Up to 236.8 kb/s	Power	9-30VDC
SIM	2 x SIM slots (Mini SIM - 2FF), 1.8 V/3 V, external SIM holders, Auto Switch	Operating Temperature	-40 to 75 °C
Lan Port	Two (2) Three (3)	LAN Protocol	3 x LAN ports, 10/100 Mbps, compliance IEEE 802.3, IEEE
RS-485/232 Port	One (1)	WAN Protocol	1 x WAN port 10/100 Mbps, compliance IEEE, 802.3, IEEE 802.3u standards.
Wifi	SSID stealth mode and access control based on MAC address	Security	VPN , Firewall, Access control, WEB filter

BATTERY

Battery

Number of Batteries	Two (2) 12v50Ah	Operating Temperature (Normal)	-20 to 50 °C
Cathode Material	Lithium-Ion	Operating Temperature (Discharge)	-20 to 50 °C
Voltage per Battery	24vDC	Weight per Battery	5 Kg
Capacity	50Ah (26.8vDC/1200Wh)	Warranty	1500 @ 30% discharge

CAMERA BOX

Camera Box Install

Typical Height	30.5m (100')
Max Height	76.2m (250')
Wind Speed Rating	120 Km/h
Camera Power	High poE (60w)
Cable Type	Outdoor Rated Gel Insulated Cat6e
IP Rating	IP 56

POWER BOX

Power Box Install

Typical Height	3m (10')
Mounting	Temporary or Permanent Bracket
IP Rating	IP 56
Power Input	120v AC
Power output	24v DC - PoE

AC TO DC

Charger

Input Voltage Range	85VAC - 140VAC
Input Frequency	45Hz - 65Hz
Charging Protection	Battery Reverse Polarity / Output Short Circuite / Over Temp
Charging Current	16Amp
Certification	EN-IEC 60335-1, EN-IEC 60335-2-29, EN 62109-1

Other Features

Remote Relay operation, Programmable Operation, Remote On/Off, Battery Temp Sensor, Instantaneous Transfer Switch (UPS)

Prepare for the worst – work with the best.

Our Pole Mount Mobile Fire Detection Unit offers **unparalleled** Wild Fire detection.

With the FS-PMFDU-01 access is available via 5G /LTE networks to the most remote of regions.

The use of pre existing infrastructure allows for a cost and time saving installation. Expand your current abilities to detect fire, smoke and ignition events with our pole mounted fire detection unit.

FireSafe provides flexible purchasing options, including buying, leasing, or renting units that are ready for immediate deployment.

For more information about our disaster detection products, to schedule a site assessment, or submit a purchase order.



(587)402-9156

www.firesafe.live

